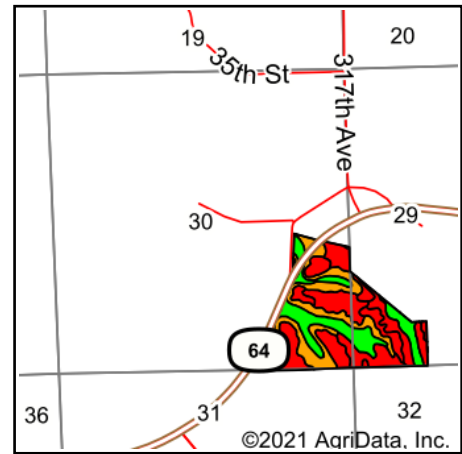
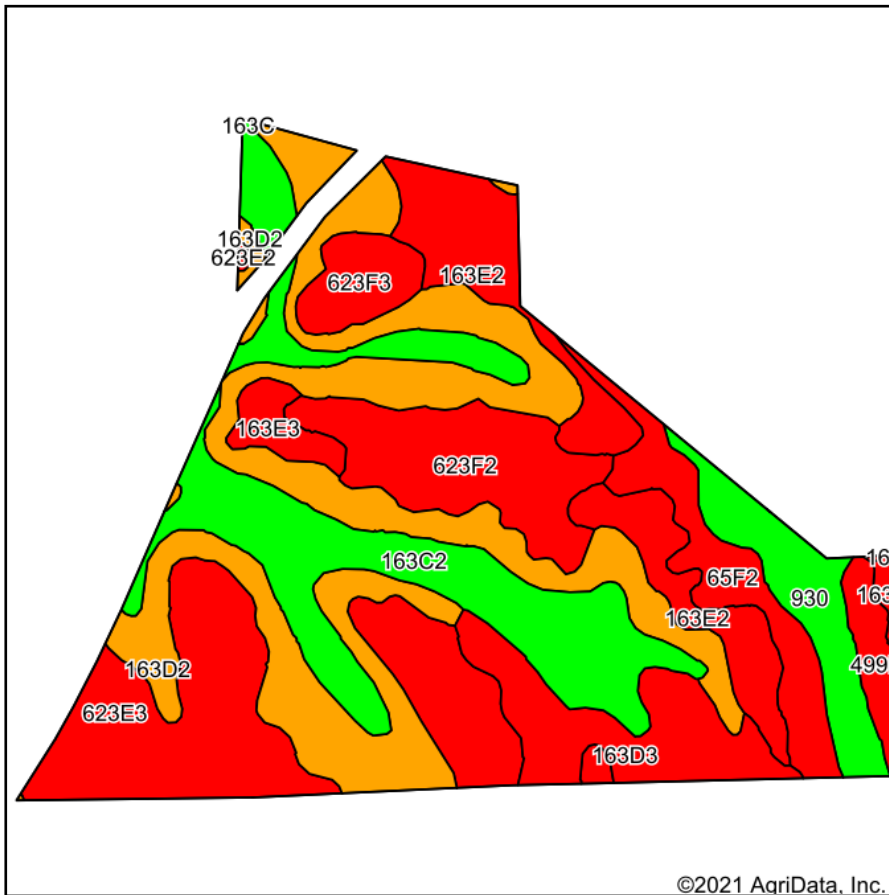


# Soils Map - Total Acres



State: **Iowa**  
 County: **Jackson**  
 Location: **30-84N-4E**  
 Township: **Fairfield**  
 Acres: **100.24**  
 Date: **9/2/2021**



Area Symbol: IA097, Soil Area Version: 26

Code	Soil Description	Acres	Percent of field	CSR2 Legend	Non-Irr Class *c	*i Corn	*i Alfalfa	*i Soybeans	CSR2**	*n NCCPI Corn	*n NCCPI Soybeans
163D2	Fayette silt loam, 9 to 14 percent slopes, moderately eroded	25.03	25.0%		IIIe	164.8	4.6	47.8	46	79	63
163C2	Fayette silt loam, 5 to 9 percent slopes, moderately eroded	17.16	17.1%		IIIe	193.6	5.4	56.1	72	83	68
623E3	Rozetta silty clay loam, 14 to 18 percent slopes, severely eroded	15.51	15.5%		VIe	129.6	3.6	37.6	31	75	58
163E2	Fayette silt loam, 14 to 18 percent slopes, moderately eroded	9.61	9.6%		IVe	140.8	3.9	40.8	35	75	59
623F2	Rozetta silt loam, 18 to 25 percent slopes, moderately eroded	8.24	8.2%		VIe	116.8	3.3	33.9	21	65	51
163D3	Fayette silty clay loam, 9 to 14 percent slopes, severely eroded	6.80	6.8%		IVe	153.6	4.3	44.5	40	74	54
65F2	Lindley silt loam, 18 to 25 percent slopes, moderately eroded	5.47	5.5%		VIIe	110.4	3.1	32	10	55	38
930	Orion silt loam, 0 to 3 percent slopes, occasionally flooded	5.07	5.1%		IIw	177.6	4.6	51.5	81	80	90
623F3	Rozetta silty clay loam, 18 to 25 percent slopes, severely eroded	2.95	2.9%		VIe	105.6	3	30.6	13	60	42
163E3	Fayette silty clay loam, 14 to 18 percent slopes, severely eroded	2.21	2.2%		VIe	129.6	3.6	37.6	29	70	50
499F	Nordness silt loam, 14 to 35 percent slopes	2.11	2.1%		VIIIs	88	2.5	25.5	5	13	6
623E2	Rozetta silt loam, 14 to 18 percent slopes, moderately eroded	0.08	0.1%		IVe	140.8	3.9	40.8	38	80	69
<b>Weighted Average</b>						<b>150.8</b>	<b>4.2</b>	<b>43.7</b>	<b>42.2</b>	<b>*n 73.8</b>	<b>*n 59</b>

\*\*IA has updated the CSR values for each county to CSR2.

\*i Yield data provided by the ISPAID Database version 8.1.1 developed by IA State University.

\*n: The aggregation method is "Weighted Average using all components"

\*c: Using Capabilities Class Dominant Condition Aggregation Method

Soils data provided by USDA and NRCS.